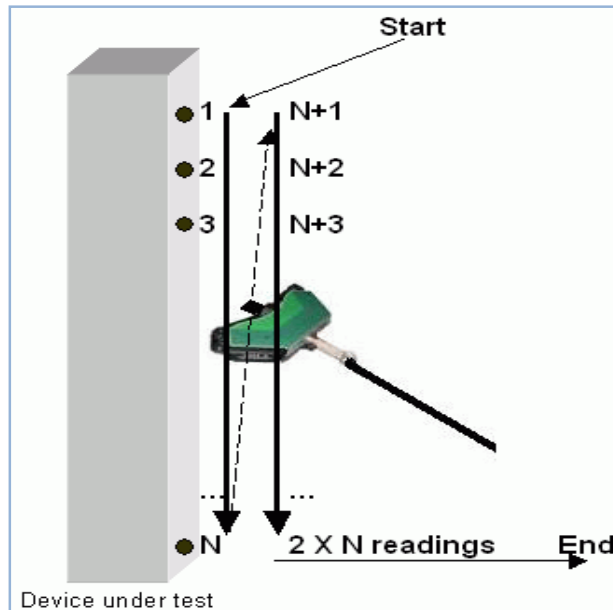


Insulator Scanning Procedure

Universal Tester

To get two curves on the resulting graphs, two readings are required per tested point. A minimum of 5 points (10 readings) is recommended to make a graph.

To take readings, the Universal Probe should be oriented approximately perpendicular to the axis of the insulator and pressed against the insulator, engaging the actuator that takes a reading of the Electric-Field.



The number of readings you will take to scan an insulator is *equal to two times the number of tested points N on the insulator (2*N)*. Tested points can be either the pin under the porcelain bells or composite skirts or any insulating surfaces. The best practice in scanning is to take readings by pressing the pressure switch of the Probe against the insulator, starting at the upper end and progressing toward the lower end of the insulator and repeating a second time.



Quick Start Guide for Universal Insulator Tester

Quick Start Guide

Universal Tester

- **BEFORE a Testing Session**

- Enter a list of Insulator Identifications
- Check the Bluetooth link
- Check Date and Time of the Tablet/ PC
- Recharge batteries of the Tablet/ PC and the probe

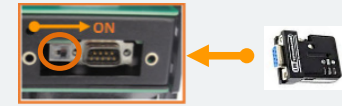
- **DURING a Testing Session**

- Connect and check the Bluetooth link before beginning
- Get close to the insulator base
- Press the push-button on the probe (if required after timeout)
- Scan one insulator (see Scanning Procedure on last page)
- Press the **Download** button on the Tablet/ PC
- Press the **TAG** button and select an identification
- Press the **Graphic** button
- Press the **Accept** or **Reject** button
- Press the **Alert** button to give instructions to the person at the base of the insulator
- Repeat scan, **Download**, **TAG**, **Graphic** and **Accept** for each insulators
- Press **Close** to save power when all insulators are tested
- Switch probe **OFF**

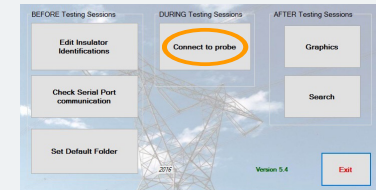
Basic Instructions

When in the field, ensure that the Tablet/PC WiFi is disabled

- Switch probe **ON**
- Insert Bluetooth transmitter with switch in **DCE** mode



While the Probe is at ground level, launch the Insulator Tester Software on the Tablet/PC and select **Connect to probe**



Select the COM Port

Ensure probe is in Awake Mode by pressing on the push button



Attach the probe to the hot stick



- **AFTER a Testing Session**

- Press the **Graphics** button to display any insulator's data
- Press **Search** to find all graphics related to a given insulator showing its degradation over time

Notes:

- Practice manipulations of the tester can be done while Bluetooth communication is active and the probe is in Sleep Mode
- The probe will go to Sleep Mode after four (4) minutes of no communication, press the probe's button to awaken it
- The pre-installed small insulator edge guide can be removed from the pressure switch before testing a porcelain string

Position Insulator Tester

