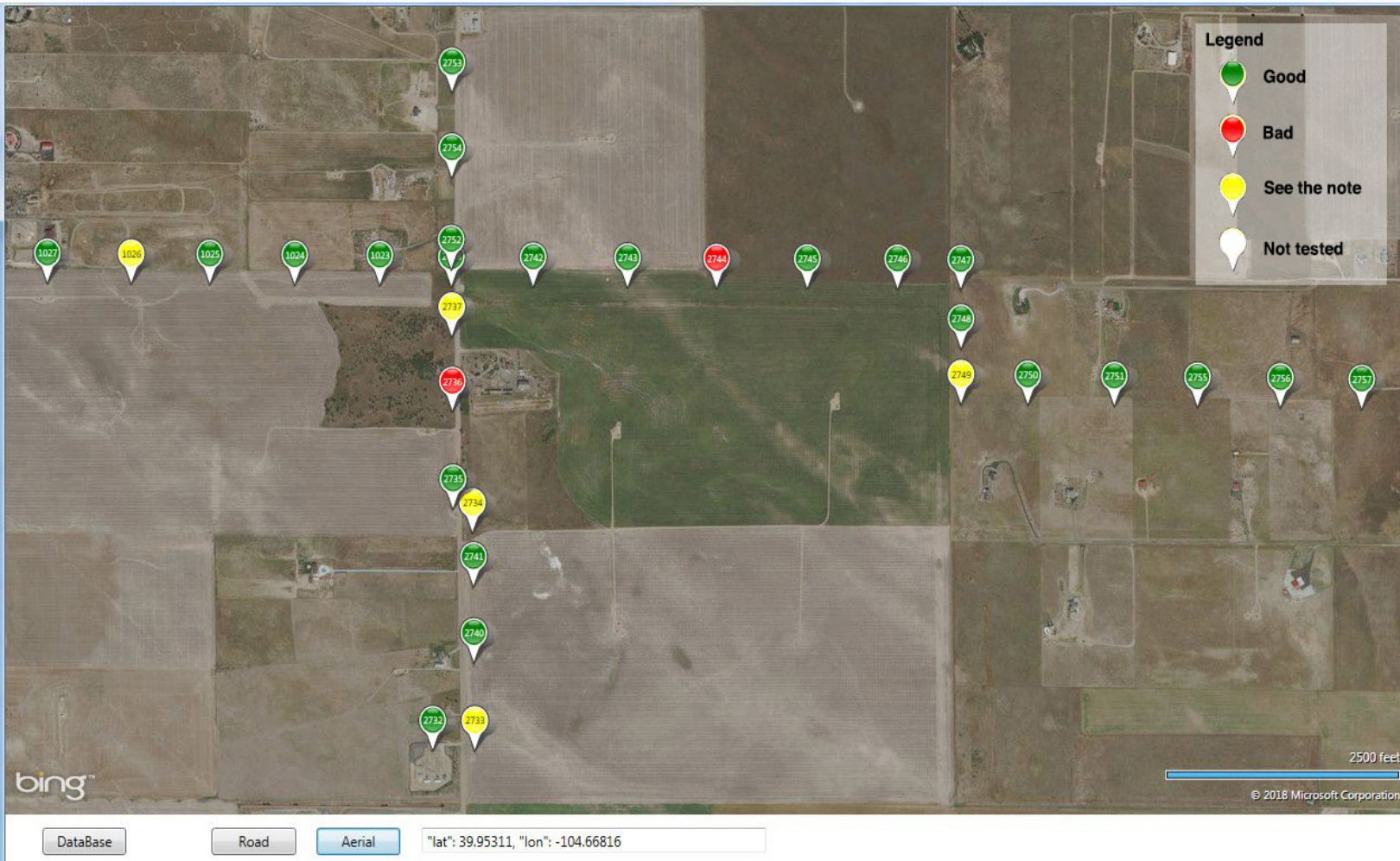
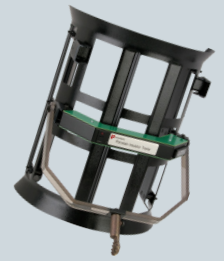
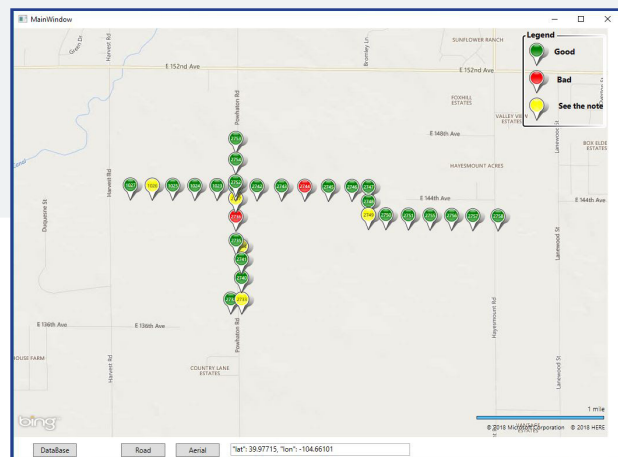


Mapping the Health of Your Power Network



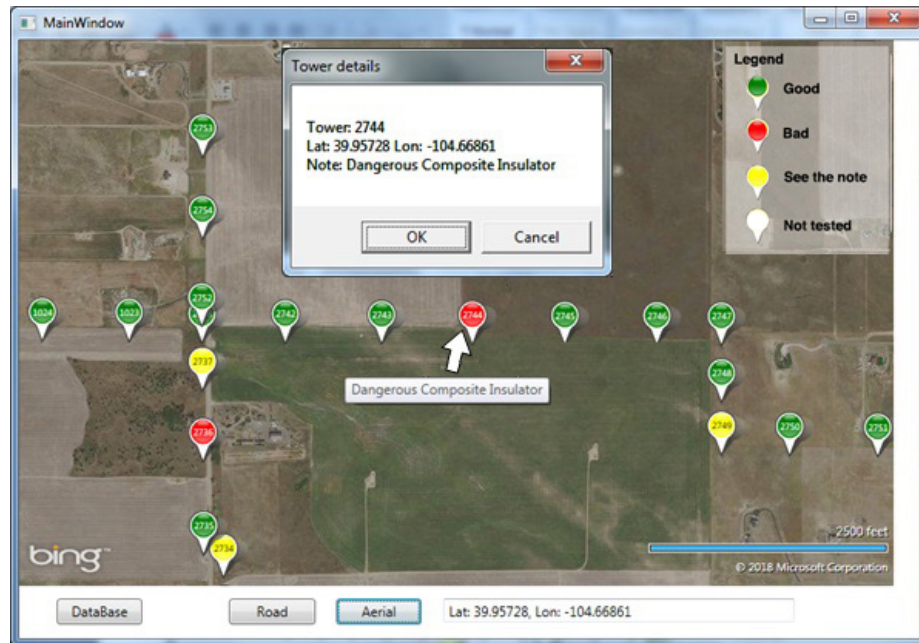
Positron's Mapping System displays at a glance the health and location of the insulators in the power network. Using a JSON database from Positron's Insulator Testers, it includes the tower identity, its GPS coordinates, the condition of the insulators identified by line, phase, etc. and supplemental data that the power utility can tag to each tower. Color-coded tags show you where the issues are so action can be planned.

The road view enables you to plan the access route for repair crews.



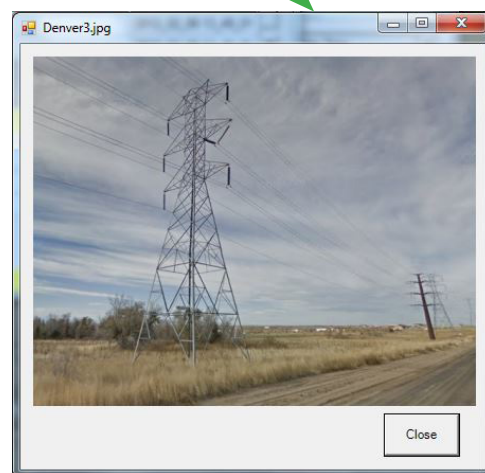
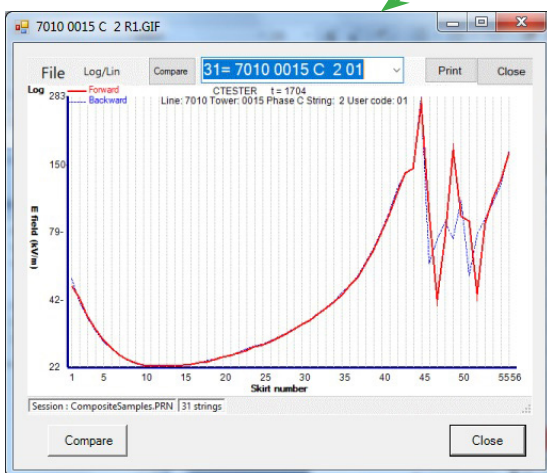
Manage your Assets - Prevent Power Outages

Simply by selecting a tower, a dialog box appears with the tower number, its latitude and longitude as well as notes about the condition of the tower's insulators.



The next click opens the information table for the insulators of that tower. Choose an insulator and then click on **Graphic**. The associated graph of the E-Field of that insulator is displayed clearly showing the defect. Click on **Tower Picture** to see the picture of the associated tower.

Line	Phase	Insul_no	Code	Note	Date Time
4412	B	1	R1	Defect of length = 30%	2018_02_06 13_49_01
4412	B	2	G0	OK	2018_02_06 13_49_01
4491	B	1	G0	OK	2018_02_06 13_49_01
4491	B	2	G0	OK	2018_02_06 13_49_01
4412	M	1	G0	OK	2018_02_06 13_49_01
4412	M	2	G0	OK	2018_02_06 13_49_01
4491	M	1	G0	OK	2018_02_06 13_49_01



Positron's Power Line Mapping database provides an easy to use instantaneous overview of your network. It tells you where the threats are, helps you plan the repair work and provides you with an excellent tool for your asset management.

Doc#: PID-Map-040918