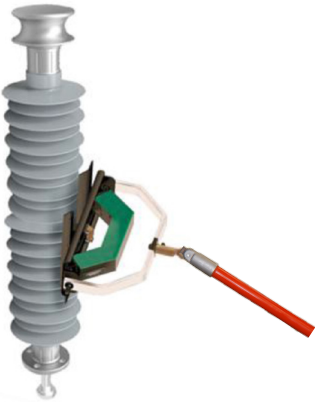
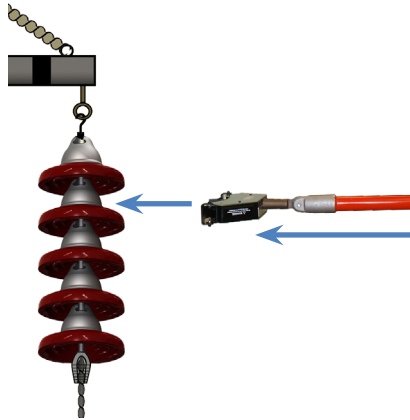


## The Substation Insulator Tester has two modes of operation:

- For insulators or bushings longer than 3 feet
- For porcelain strings having less than 10 discs
- For any insulator shorter than 4 feet

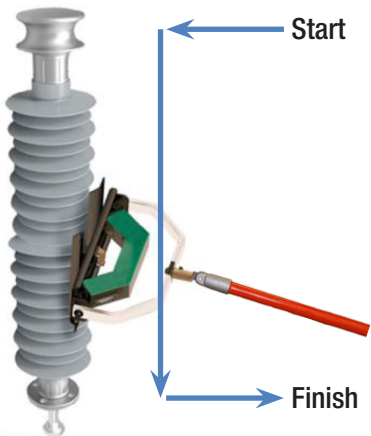


Using the ski-guide attachment

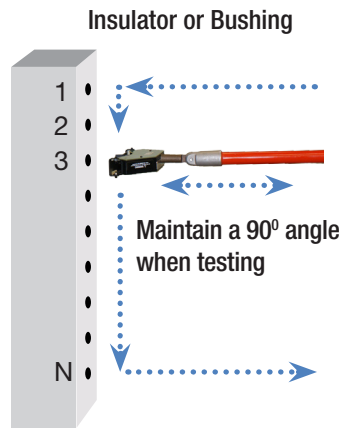


Using the pressure switch attachment

## The two modes of operation use a One-Way scan:



Apply a slight pressure to maintain direct contact between the tester and the bushing as the tester glides along the bushing



Press the probe's pressure switch actuator below each disc of a porcelain string or between the skirts of a bushing



# Quick Start Guide for Substation Insulator Tester

© Positron Inc.

Positron Inc., 5101 Buchan, Suite 220  
Montreal, Quebec, H4P 2R9 Canada • Tel: +1-514-345-2220

[www.positronpower.com](http://www.positronpower.com)



[www.positronpower.com](http://www.positronpower.com)

# Quick Start Guide

## Substation Insulator Tester

- **BEFORE a Testing Session**

- Enter a list of Insulator Identifications
- Check the Bluetooth link
- Check Date and Time of the Tablet/ PC
- Recharge batteries of the Tablet/ PC and the probe

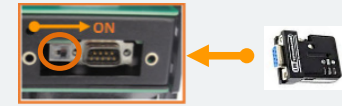
- **DURING a Testing Session**

- Connect and check the Bluetooth link before beginning
- Get close to the insulator base
- Press the push-button on the probe (if required after timeout)
- Scan one insulator (see Scanning Procedure on last page)
- Press the **Download** button on the Tablet/ PC
- Press the **TAG** button and select an identification
- Press the **Graphic** button
- Press the **Accept** or **Reject** button
- Press the **Alert** button to give instructions to the person at the base of the insulator
- Repeat scan, **Download**, **TAG**, **Graphic** and **Accept** for each insulators
- Press **Close** to save power when all insulators are tested
- Switch probe **OFF**

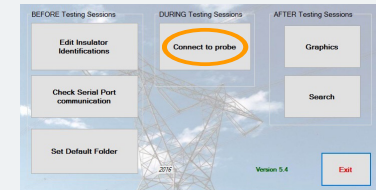
### Basic Instructions

**When in the field, ensure that the Tablet/PC WiFi is disabled**

- Switch probe **ON**
- Insert Bluetooth transmitter with switch in **DCE** mode

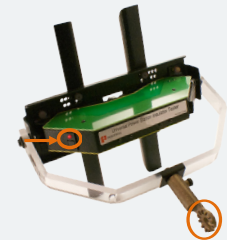


While the Probe is at ground level, launch the Insulator Tester Software on the Tablet/PC and select **Connect to probe**



Select the COM Port

Ensure probe is in Awake Mode by pressing on the push button



Attach the probe to the hot stick

- **AFTER a Testing Session**

- Press the **Graphics** button to display any insulator's data
- Press **Search** to find all graphics related to a given insulator showing its degradation over time

### Notes:

- Practice manipulations of the tester can be done while Bluetooth communication is active and the probe is in Sleep Mode
- The probe will go to Sleep Mode after eight (8) minutes of no communication, press the probe's button to awaken it
- The pre-installed small insulator edge guide can be removed from the pressure switch before testing a porcelain string

Position Insulator Tester

